

Unique Technology, Only from Panasonic, Has Created the World's First* Lens for High-Brightness 3-Chip DLP™ Projectors Featuring the World's Shortest* Throw

* For detachable lenses for 3-chip DLP™ projectors as of June 2014.

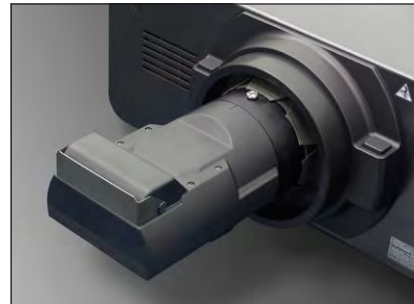


Photo shows the ET-D75LE90 mounted to the PT-DZ21K 3-chip DLP™ projector.

Versatile Spatial Effects

- Enables large-screen projection in small spaces.
- Allows a 20,000-lm-class projector to project a 200-inch-diagonal image from a distance of about 1.5 m (about 5 ft).

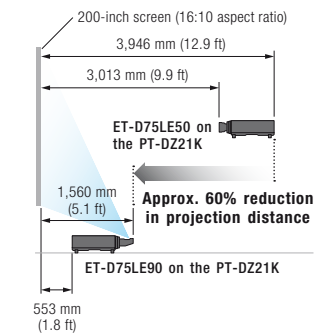
Effective Space Utilization

- Installs in small spaces for highly effective space utilization.

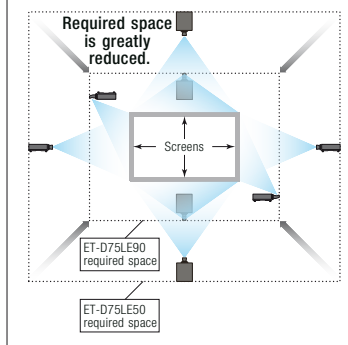
Easy Installation

- Ultra short throw projection is possible by simply exchanging the lens.

The Ultra Short Throw Lens Solves "Space" Issues and Adds High Brightness



Necessary Installation Space:
ET-D75LE90 vs ET-D75LE50
(mounted on the PT-DZ21K)



Specifications (Tentative)

Throw ratio	
WUXGA/Full-HD	Approx. 0.36:1
SXGA+	Approx. 0.39:1
WXGA	Approx. 0.40:1
F value (focal ratio)	F 2.5
Applicable projectors	All Panasonic 3-chip DLP™ projectors except the PT-D9500 Series and PT-D9600 Series
Screen size (diagonal)	120–600 inches
Weight	Approx. 7.0 kg (15.4 lbs)

