

User instructions FP Liftomatic



Suitable for the 85" and 103" Liftomatic

Need to knows:

-The feet will only retract when the front (swivel) wheels are in line (drive direction).



-De screen will only lift when the wheels are retracted (only with the 103" Liftomatic).

-De wheels wil only unfold when the screen is in lower position (only with the 103" Liftomatic)..

-The screen will not lower when it is in pivoted position (portrait position) (only with the 103" Liftomatic)..

-When the wheels are retracting, a warning sound will be heard.

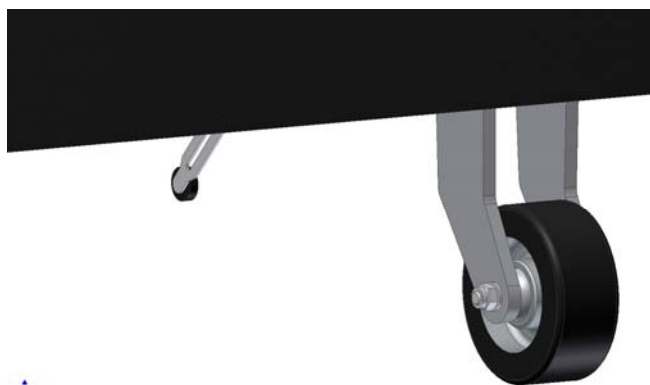
-The weight of the flat screen in lower position is schock absorbed during transport on it's own wheels or inside the flightcase.

-The maximum lift cappacity of the lift system is may never be exceeded. Please refer to the prodyct details on the back of the system for max. load.

-When activating the lift system up and directly down, allow 10 minutes engine cooling down time.

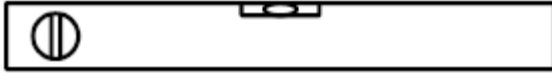
-Beware of feet and cables on the floor when lowering the system on the floor.

-Beware of the floor switch when transporting the FP liftomatic with a fork lift.



-The portrait limit switch must be set before lowering the screen in Portrair mode (only with the 103" Liftomatic).

The flat panel Liftomatic is the ideal product for transporting and presenting your large flat panel monitor.
Please read first and follow up the instructions for handling your FP Liftomatic.
Always use your system or install the flat panel on a flat surface!



1.

The FP Liftomatic is fitted in a rigid Audipack Flightcase.
To remove the system open the flightcase and loosen the safety bar by releasing the black knob.

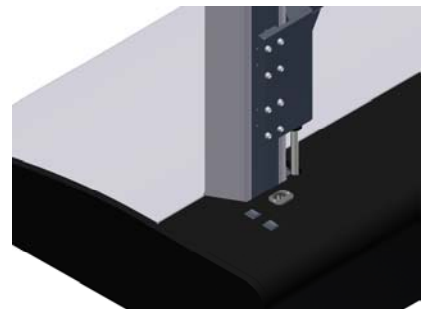
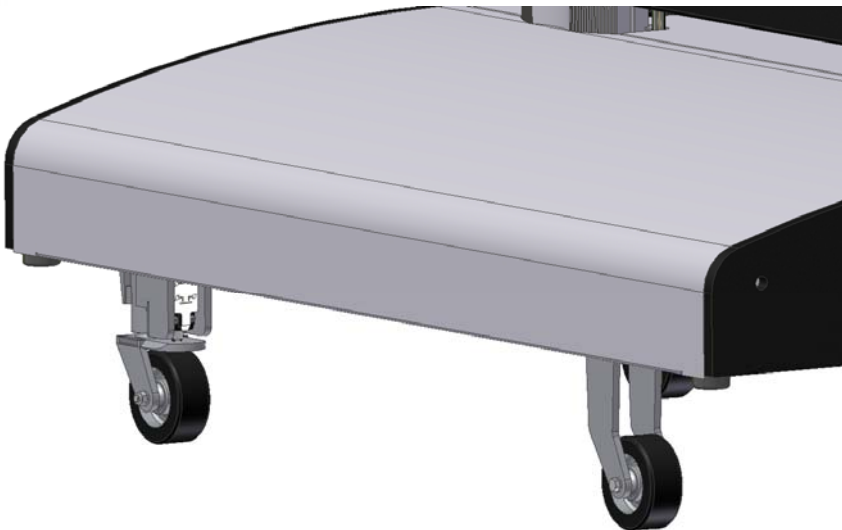
2.

To remove the FP Liftomatic the retractable wheels of the lift system must be unfolded.
Plug in the power cord and push the lower down button on the column to activate the retracted wheel and unfold them.

Push the button until the systems stops automatically.

During the descend of the wheel a warning signal is given.

The FP Liftomatic will raise it self from the flight case and is ready to be driven out of the case.



Warning:

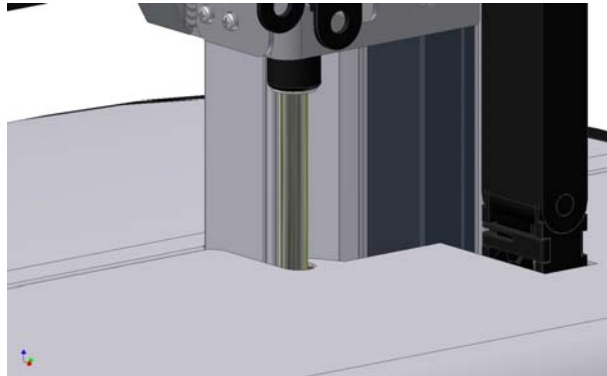
When the system is driven out of the flight case, the wheel will only retract again when they are in drive direction!



3.

The FP Liftomatic has a brand related mounting bracket that will fit your specific brand and type of monitor. We advise to keep the wheels in lifted position for maximum flexibility during installation of the flat panel.

Install the flat panel gently while the FP Liftomatic is still in lower position. In this case the build-in shock absorbers will absorb severe trembling during the installation of the flat panel.



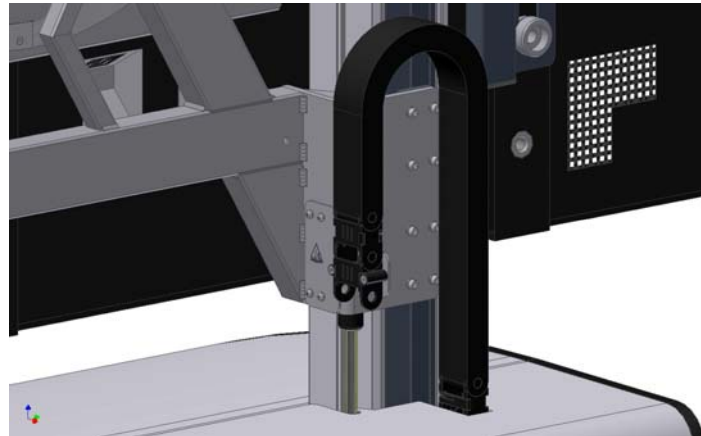
Build-in shock absorbers (only with the 103" Liftomatic).

Use an external lifting device to install the Flat panel to the FP Liftomatic.



When the flat panel is installed and secured with 2 the appropriate bolts, the power cord and signal cables can be pre-installed in the cable guidance chain. The cable guidance segments can easily be opened without using tools. Simply guide each cable from bottom to top.

Even better is to secure the cables with small tighraps. Keep extra cable length in mind when using the flat screen in portrait position.



Warning!

When installing the flat panel, keep the ventilation direction of the flat panel in mind when the flat panel is in pivoted position. It might be possible to adjust the primary landscape orientation of the lift system.

Refer to the flat panel specifications for the right up right position of the flat panel.

3a.

Before pivoting the flat screen in a lower position than the most upper position, the limit switch on the column must be set on the right height. If not the screen can be damaged during lowering!!! The right position of the limit switch depends on the size of the flat screen (only with the 103" Liftomatic).



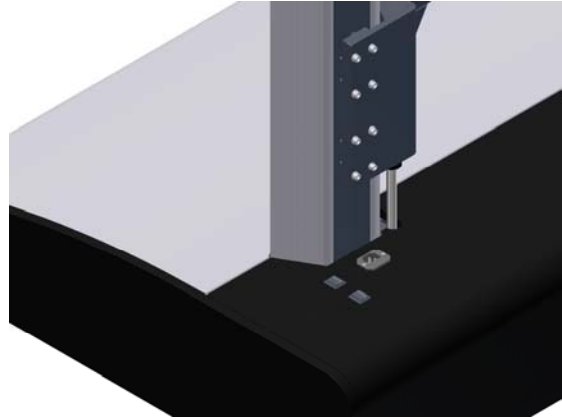
5.

In transport mode the total weight of the flat screen is mechanically separated from the drive unit. This big advantage prevents receiving heavy shocks on the drive unit during transport (only with the 103" Liftomatic).

When activating the system, allow the motor drive of the wheels to reach both **end positions** before activating the lift mechanism.

Allow the lift mechanism to lower completely until the drive units stops by it selve before activating the wheels motor drive.

The 85" Liftomatic is rubber suspended, Please keep in mind when transporting over rough terrain. Too rough terrain be damage the wheel system or internal components.



6.

When the flat screen is lifted up, the unit can be (gently) manually rotated to portrait mode.

Unlock the safety pin and gently rotate the flat panel in position.

In portrait mode it is NOT possible to lower the flat panel (only with the 103" Liftomatic).

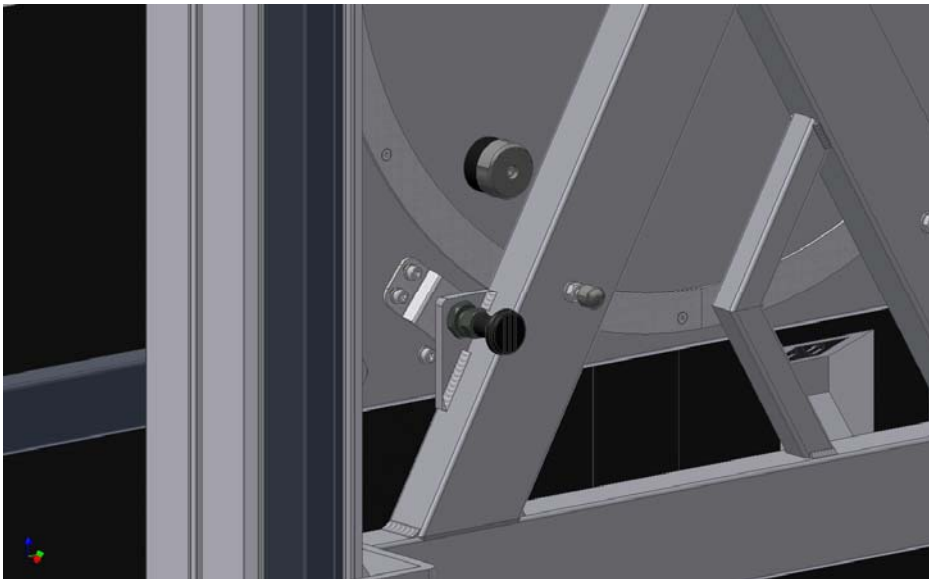
When reaching the end positions, the rubber stops will prevent end stop shocks.

When using the system for the first time, it might be possible to set both end positions (landscape and portrait) with the adjustable locking plates.

Release the 4 pcs. M6 bolts and make sure the flat panel is rotated in level position on the lift system. Tighten the bolts again when finished.

After severe adjustment it might be possible the landscape safety switch is not activated anymore in "0" position. The consequence is a not descending lift system.

Reposition the switch that it will be activated when the flat screen is landscape position and locked.



7.

IN CASE OF EMERGENCY ONLY, contact Audipack before trying!

Manual override when power supply fails

Lowering the flat panel (do not use for lifting!)

The FP Liftomatic has the possibility of manual decending the flat screen to transport position.

Important to know is that a manual operation can damage the system.

Lowering the flat panel to transport position; rotate the left hand lever **counter clockwise**. Check for enough clearance in the shock suspension. Do not continue too long with lowering because there is no mechanical end stop, only electrical.

Unfolding the wheels

Lifting the system on it's wheels; rotate the right lever **clockwise**.

Whenn the wheel are free from the floor stop using the manual activation.

Warning!

Retracting the wheels manual is not advisable, manouvre the system to the nearest power socket for electric use. In a emergency situation rotate the right side lever counter clockwise.

Be aware to stop unfodling the wheels when they are vertikal. Continuing unfodling the wheels more then there maximum can damage the internal end switches!



The LEFT lever is for manual flat panel lowering

The RIGHT lever is for unfolding the wheels

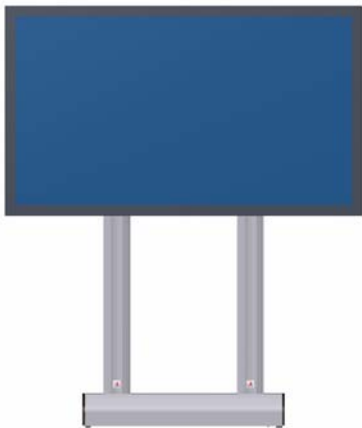
Overview flat screen positions.



Driven out of the flightcase
Ready for indoor transport



Retracted feet
Ready for lifting



Flat panel in upper position
Landscape mode



Flat panel in upper position
Portrait mode



Flat panel in upper position
Portrait mode
Movable, no
decending!

Technical specifications 85" Liftomatic:

System dimensions	: 1365 x 1820 x 1820/2005 mm
System weight	: 225 Kg. (excl. monitor bracket)
Max. Load	: 150 Kg.
Lift speed	: 50 sec. From transport to max. Presentation height
Wheels unfolding time	: 10 sec.
Maximum lift motor running time	: 4 min running, 10 minutes cool down time.

Technical specifications 103" Liftomatic:

System dimensions	: 1190 x 670 x 1470 / 1670 mm
System weight	: 135 Kg. (excl. monitor bracket)
Max. Load	: 150 Kg.
Lift speed	: 20 sec. From transport to max. Presentation height
Wheels unfolding time	: 10 sec.
Maximum lift motor running time	: 4 min running, 10 minutes cool down time.